

# Excellate SA

## ORCHARDGRASS

EXCELLATE SA (Summer Active) is a late maturing orchardgrass that is broadly adapted to a wide range of climates, soil types and management practices. Truly a multipurpose variety. The primary focus in the breeding of Excellate SA was to create an elite, aggressively spreading variety with a longer growing season for expanded forage production while retaining sufficient cold tolerance for most of the U.S.

### GRAZING

- Specifically bred with grazing in mind
- Remarkable disease resistance ensures top palatability
- Excellent Summer Performance
- Spreading crowns knit together quickly to form a stable sod

### HARVESTED FORAGE

- As much as one month later in heading than the earliest orchardgrasses on the market
- High forage yields paired with late maturity and high quality
- Spreading crowns minimize the "clumpiness" typical of other orchardgrasses
- Tolerates today's aggressive cutting schedules



## BACKGROUND

EXCELLATE SA is a late maturing orchardgrass bred for several unique characteristics. The combination of a low set crown and a semi erect growth habit allow EXCELLATE SA to be a truly dual purpose variety. Another breeding objective for EXCELLATE SA was to increase summer performance, the proof of which has been observed in trials. Also EXCELLATE SA was specifically bred to break dormancy early in the spring and continue growing late into the fall while maintaining winter hardiness. We have seen excellent stands in New York, Ohio and Pennsylvania so we are confident that EXCELLATE SA has the winter hardiness needed for these northern regions.

## APPLICATION

EXCELLATE SA has broad adaptability across many climates, soil types and management schemes. It's late heading date makes it a good candidate for mixtures with alfalfa. It would also match well with medium maturing Perennial ryegrasses, late tall fescues, and medium maturing timothy. EXCELLATE SA is unique among orchardgrasses because it was selected for spreading crowns and grazing tolerance so it is one of only a very few varieties of orchardgrasses that is well suited for grazing. And with top trial performance from Kentucky to New York, it is proving it fits a very broad geography. For farm applications where the producer plans to harvest and graze the stand, EXCELLATE SA is truly a unique dual purpose orchardgrass.

## SEEDING RATES & MANAGEMENT

Pure Stand: 15-20 lbs/acre

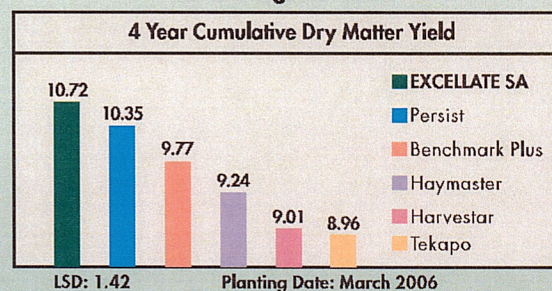
EXCELLATE SA is an excellent minor component with alfalfa and as a leading component in mixtures with tall fescue, perennial ryegrass, timothy and clovers.

Percentages and seeding rates vary depending on application and geographical region. Follow your local extension agent or seed dealer's recommended rate.

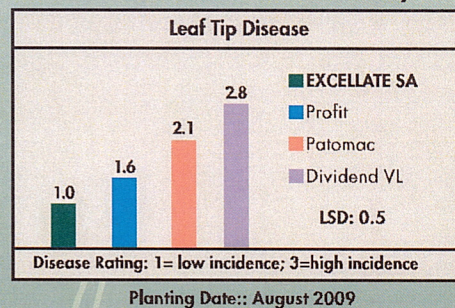
### 2006 Penn State Cool Season Grass Trial 2009 data

Variety	Heading date	Late July - Mid Aug 3rd Cut
EXCELLATE SA	6/1	1.06
Harvestar	5/22	0.77
Amrosia	5/22	0.77
Pennlate	5/15	1.02
Quick Draw	5/15	0.73
Tucker	5/1	0.94

### University of Kentucky 2009 Orchardgrass Trial



### Cornell University 2010 Perennial Grass Yield Summary



### Greenville, TN Research and Education Center Yield (Tons Dry Matter/Acre)

